

**Anti-RUNX2 Monoclonal Antibody**  
**Catalog # ABO14378****Specification**

---

**Anti-RUNX2 Monoclonal Antibody - Product Information**

Application	WB, IHC, IF, ICC
Primary Accession	<a href="#">Q13950</a>
Host	Rabbit
Isotype	Rabbit IgG
Reactivity	Rat, Human, Mouse
Clonality	Monoclonal
Format	Liquid

**Description**

Anti-RUNX2 Monoclonal Antibody . Tested in WB, IHC, ICC/IF applications. This antibody reacts with Human, Mouse, Rat.

**Anti-RUNX2 Monoclonal Antibody - Additional Information**

**Gene ID** 860

**Other Names**

Runt-related transcription factor 2, Acute myeloid leukemia 3 protein, Core-binding factor subunit alpha-1, CBF-alpha-1, Oncogene AML-3, Osteoblast-specific transcription factor 2, OSF-2, Polyomavirus enhancer-binding protein 2 alpha A subunit, PEA2-alpha A, PEBP2-alpha A, SL3-3 enhancer factor 1 alpha A subunit, SL3/AKV core-binding factor alpha A subunit, RUNX2, AML3, CBFA1, OSF2, PEBP2A

**Application Details**

WB 1:500-1:2000<br>IHC 1:100-1:500<br>ICC/IF 1:50-1:200

**Contents**

Rabbit IgG in phosphate buffered saline, pH 7.4, 150mM NaCl, 0.02% sodium azide and 50% glycerol, 0.4-0.5mg/ml BSA.

**Immunogen**

A synthesized peptide derived from human RUNX2.

**Purification**

Affinity-chromatography

Storage

**Store at -20°C for one year. For short term storage and frequent use, store at 4°C for up to one month. Avoid repeated freeze-thaw cycles.**

**Anti-RUNX2 Monoclonal Antibody - Protein Information**

**Name** RUNX2

**Synonyms** AML3, CBFA1, OSF2, PEBP2A

#### **Function**

Transcription factor involved in osteoblastic differentiation and skeletal morphogenesis (PubMed:<a href="http://www.uniprot.org/citations/28505335" target="\_blank">28505335</a>, PubMed:<a href="http://www.uniprot.org/citations/28703881" target="\_blank">28703881</a>, PubMed:<a href="http://www.uniprot.org/citations/28738062" target="\_blank">28738062</a>). Essential for the maturation of osteoblasts and both intramembranous and endochondral ossification. CBF binds to the core site, 5'-PYGPYGGT-3', of a number of enhancers and promoters, including murine leukemia virus, polyomavirus enhancer, T-cell receptor enhancers, osteocalcin, osteopontin, bone sialoprotein, alpha 1(I) collagen, LCK, IL-3 and GM-CSF promoters. In osteoblasts, supports transcription activation: synergizes with SPEN/MINT to enhance FGFR2-mediated activation of the osteocalcin FGF-responsive element (OCFRE) (By similarity). Inhibits KAT6B-dependent transcriptional activation.

#### **Cellular Location**

Nucleus. Cytoplasm {ECO:0000250|UniProtKB:Q08775}

#### **Tissue Location**

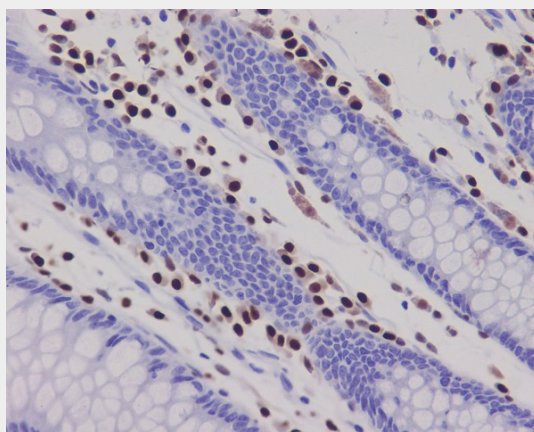
Specifically expressed in osteoblasts.

### **Anti-RUNX2 Monoclonal Antibody - Protocols**

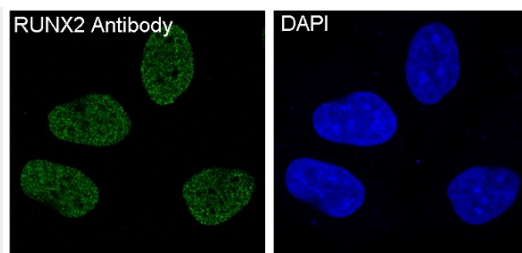
Provided below are standard protocols that you may find useful for product applications.

- [Western Blot](#)
- [Blocking Peptides](#)
- [Dot Blot](#)
- [Immunohistochemistry](#)
- [Immunofluorescence](#)
- [Immunoprecipitation](#)
- [Flow Cytometry](#)
- [Cell Culture](#)

### **Anti-RUNX2 Monoclonal Antibody - Images**



Immunohistochemical analysis of paraffin-embedded human colon, using RUNX2 Antibody.



Immunofluorescent analysis of Saos-2 cells, using RUNX2 Antibody.

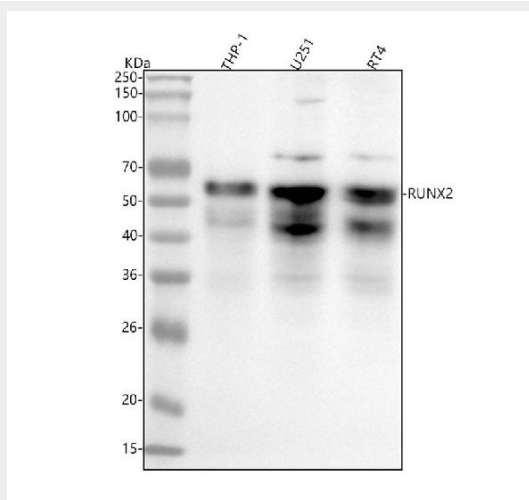


Figure 1. Western blot analysis of RUNX2 using anti-RUNX2 antibody (M00442).

Electrophoresis was performed on a 5-20% SDS-PAGE gel at 70V (Stacking gel) / 90V (Resolving gel) for 2-3 hours. The sample well of each lane was loaded with 30 ug of sample under reducing conditions.

Lane 1: human THP-1 whole cell lysates,

Lane 2: human U251 whole cell lysates,

Lane 3: human RT4 whole cell lysates.

After electrophoresis, proteins were transferred to a nitrocellulose membrane at 150 mA for 50-90 minutes. Blocked the membrane with 5% non-fat milk/TBS for 1.5 hour at RT. The membrane was incubated with rabbit anti-RUNX2 antigen affinity purified monoclonal antibody (Catalog # M00442) at 1:500 overnight at 4°C, then washed with TBS-0.1%Tween 3 times with 5 minutes each and probed with a goat anti-rabbit IgG-HRP secondary antibody at a dilution of 1:500 for 1.5 hour at RT. The signal is developed using an Enhanced Chemiluminescent detection (ECL) kit (Catalog # EK1002) with Tanon 5200 system. A specific band was detected for RUNX2 at approximately 57 kDa. The expected band size for RUNX2 is at 57 kDa.